



# NEWSLETTER

## MESSAGE FROM THE PRINCIPAL—DAVID TYSON

PERSONAL BEST, RESPONSIBILITY, RESPECT, UNDERSTANDING, TOLERANCE & INCLUSION

# Templestowe College

### RIDING THE BIG WAVES

Over the holiday I embraced the sport of body boarding when holidaying at Barwon Heads with my family. It was fantastic fun to catch the waves on the board and see how far I could ride them.

I have taken it a step further since then by having lessons to get the most out of the sport and have learnt so much in doing so.

It was interesting to be placed in the position of the **learner** rather than being the **teacher**, which is my normal role in the school situation.



It really is a sobering experience to stand in another person's shoes. Being placed in the shoes of the learner I experienced the awkwardness of doing something new.

Having never worn a wet suit before I felt very self conscious and I now understand how our Year 7s must feel on their first day in their new uniform.

Furthermore, I was uncertain about asking questions and was concerned about not understanding instructions—all those human fears and concerns that every new learner faces.

The best thing about my body boarding lesson was that I had a wonderful teacher who showed me in such a positive manner how to improve my technique when catching a wave.

It's no more catching the easy waves for me close to shore as I have new found skills and confidence to tackle the more difficult and bigger waves.

That's what I want every student at the College to do too—to tackle the more difficult and bigger challenges in life because they have posi-

tive teachers to give the skills and confidence to do so.

From taking on body boarding I have learnt a lot of new skills and I have learnt so much more about myself and the work I do to help people be effective learners to catch "the big waves" away from the safety of the shore.

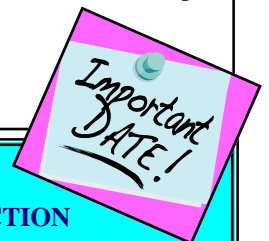
Congratulations to our top overseas student **Khoi Nguyen** with an ENTER of 98.6. I always admire the efforts of our international students because of their ability to study in an unfamiliar language thousands of kilometres from the direct support of family and friends while coming to grips with a new environment and culture.

Congratulations also go to the students who gained University and TAFE places for 2008 as places were in high demand and our students did very well in what they achieved.

I would like to acknowledge and celebrate the efforts and achievements of all our VCE students in 2007 that did their personal best—you can ask no more of anyone!

I look forward in 2008 to working with the staff of the College to ensure that every student in our care strives to achieve their personal best.

I wish you all well.



Phone: (03) 9850 6333  
 Fax: (03) 9852 0728

Email: [templestowe.co@edumail.vic.gov.au](mailto:templestowe.co@edumail.vic.gov.au)  
 Website: <http://www.templestowec.vic.edu.au>  
 Cypress Avenue, Lower Templestowe Vic 3107

ISSUE No. 01  
 08 February 2008

**AEU STOP WORK ACTION**  
**THURSDAY, 14 FEBRUARY 2008**  
**ONLY STUDENTS IN YEARS 7 & 8**  
**REQUIRED AT SCHOOL**

NOTE: SUPERVISION IS AVAILABLE  
 FOR OTHER YEAR LEVELS,  
 IF REQUIRED

## Message from the Principal (cont'd)

### A FIRST FOR THE MANNINGHAM NETWORK OF SCHOOLS

We are the first Secondary College in the Manningham Network of Schools to offer VCAL (Victorian Certificate of Applied Learning) for Year 11 students.

One of three goals in our Strategic Plan is to provide pathways from Years 7 to 12 that address student needs and the introduction of VCAL is a core element in achieving this goal. I am proud of all the work done so far to implement a quality program that engages students.

Dr Watterston, Regional Director of DEECD (Department of Education & Early Childhood Development) Eastern Metropolitan Region, congratulated the school and its innovative staff on the provision of a broad range of curriculum offerings that enable all students to create pathways that better suit their lifelong learning needs and aspirations.

### PARENT PARKING

The College is very conscious of its responsibility to create a safe and secure environment for its students. There have been a number of encounters for students with parents' cars before and after school. Student safety **overrides** any necessity for a parent to pick their child up within the College grounds.

Parents are reminded that students are to be dropped off and picked up in the streets surrounding the College. The College car park area is not to be used as student drop off or pick up points. We ask that **ALL** parents assist us in making sure that there are no further accidents that threaten student safety.

## Parents' Association—AGM

### PARENTS' ASSOCIATION ANNUAL GENERAL MEETING WEDNESDAY, 13 FEBRUARY 2008

Templestowe College Parents' Association Annual General Meeting at 7.00 pm on Wednesday, 13 February, 2008 (our first meeting for the year) in the College Conference Room.

The guest speaker will be Paula Godau-Knight Asthma/Allergy Nurse Educator from Manningham Community Health Service.

There are currently 72 students in our school community who have asthma. You, or a family member, may also have asthma. To learn more about asthma and specifically Asthma in Adolescence come to the conference room Wednesday, 13 February at 7.00 pm.

### ASTHMA IN ADOLESCENCE — A HEALTH PROMOTION PROJECT

Manningham Community Health Service and Templestowe Secondary College will be working together in 2008 in looking at the issues around asthma in the teenage years. We know that teenagers don't always take their asthma seriously and that taking medication daily is a pain! We also know that this is a time in their lives where they will be pressured into risk-taking behaviours which may also affect their asthma. Sport is often stopped or cut short during the game due to shortness of breath. We would like the parents of students at Templestowe College to work with us and their children with asthma.

**Annette Knight**  
President—Parents' Association

## Education Maintenance Allowance

EMA is payable to eligible Commonwealth Health Care Cardholders. These cards need to be valid on the first day of Term 1 for Semester 1 payment and the first day of Term 3 for Semester 2 payments. Payment is forwarded in the following manner:

**Semester 1 70% received as half school portion and half parent portion.**

**Semester 2 30% received as half school portion and half parent portion.**

Parents can elect to sign these payments over in order to fund the parent contribution or specialist/elective fees, if they wish. Applications will close on Friday, 29 February 2008 and you only need apply once at the beginning of the year. However, if your details change, you can apply in Semester 2. Late applications cannot be accepted.

**Tony McCann**  
Business Manager

### LIBRARY NEWS

The library will be setting up a display area for book themes on a monthly basis. We would encourage students and staff to look at the display and read books set out for this theme. This month's theme is "diary-style Australian stories". We have a collection of interesting books from "My Australian story" series. They are a series of historical novels published by Scholastic Australia. Each book is written in the form of a fictional diary of a young person living during an important event or time period in Australian history. Some of the book titles include stories about Don Bradman, refugees, the First Fleet and many more historical events.



# College Council Elections

## COUNCIL PRESIDENT'S REPORT

### Being Involved in YOUR College

An interesting effect for parents from their children being in secondary education is the impression that the input and engagement they had with their primary school is no longer needed—an impression admittedly enthusiastically reinforced by their children discouraging mum and dad's involvement as a symbol of becoming young adults with greater independence. The reality is nothing could be further from the truth; in fact Templestowe College welcomes and needs parents' engagement in many areas, some that you may not be aware of. Some of these ways are as follows:

**College Council** – governing body, setting College policies within government frameworks that meet the needs of our local community. Support to the management team through funding, acting as an advisory 'voice' for the expectations of parents, students, teachers and community organisation.

**Council Sub-Committees** – dealing with specific aspects of College policy and operations such as curriculum, finance, student services, marketing, physical resources and grounds, student management, community relations amongst others.

**Parents' Association** – as a Sub-Committee of Council provides a less 'structured' opportunity for parent involvement than other committees and encourages socialisation, runs key events, such as our very successful Year 11 Presentation Evening, and provides a full opportunity for parents to have a 'voice' and interact closely with College management.

(PS: Not just for mothers!)

**Chaplaincy** – Chaplaincy has been an integral support function for students providing non-denominational pastoral care and counselling support to students and staff.

**Specific interest groups** – an example is the very successful 'Friends of Templestowe Performing Arts' - a group of parents largely with a focused interest in promoting and supporting this one aspect of student life at your College.

In 2007 more opportunities will be created for parent and family involvement in response to your input regarding areas of interest, as well as areas of identified need.

If you have any questions, or wish to be involved in improving any aspect of your children's educational experience, please contact:

Mr David Tyson - Principal  
 Templestowe College  
 Cypress Avenue  
 Lower Templestowe Vic 3107  
 Email: [templestowe.co@edumail.vic.gov.au](mailto:templestowe.co@edumail.vic.gov.au)

You can also write to me directly c/- Templestowe College. All correspondence will be answered within 2 weeks.

**The schedule for Council Elections for a two-year term is as follows and we welcome your nomination. (Involvement in unelected committees/groups can be for as little as 1 year).**

## TEMPLESTOWE COLLEGE COUNCIL ELECTION PROCESS: AN EXPLANATION FOR PARENTS

This is an outline of the College Council Election process.

If you decide to stand for election, you will need to arrange to be nominated and seconded by persons who are eligible for the same category as you will stand for. The Principal can provide information about these categories.

An election is to be conducted for members of the School Council of Templestowe College.

**NOMINATION FORMS MAY BE OBTAINED FROM THE SCHOOL AND MUST BE LODGED BY 4.00 PM ON 15 FEBRUARY, 2008. THE BALLOT WILL CLOSE AT 4.00 PM ON 8 MARCH, 2008.**

Following the closing of nominations a list of the nominations received will be posted at the school. The terms of office, membership categories and number of positions in each membership category open for election are as follows –

Membership category	Term of office	Number of positions
Parent member	2 Years from the day after the date of the declaration of the poll in 2008 to and inclusive of the date of the declaration of the poll in 2010	3
DE&T Employee member	2 Years from the day after the date of the declaration of the poll in 2008 to and inclusive of the date of the declaration of the poll in 2010	2

If the number of nominations is less than the number of vacancies, a notice to that effect and calling for further nominations will be posted in a prominent position at the school.

# College Council Elections (Cont'd)

“Electorate of the school” means the DE&T employee electorate of the school and the parent electorate of the school.

“Parent electorate of the school” means all persons (except the Principal) who are parents of students of the school, other than those who are DE&T employees and who opt or are deemed to opt in accordance with clause 22 to be members of the DE&T employee electorate of the school.

“DE&T employee electorate of the school” means the Principal of the school and – DE&T employees engaged in work at and for the school (other than those who are parents of students of the school and who neither opt nor are deemed to opt in accordance with clause 22 to be members of the DE&T employee electorate of the school); and

other DE&T employees who are Parents of students of the school and who opt or are deemed to opt in accordance with clause 22 to be members of the DE&T employee electorate of the school.

4. “DE&T employee” -

- (a) means a person employed for eight hours or more per week in either an on-going capacity or for a fixed term of at least 90 days -

- (i) under the *Teaching Service Act 1981*; or
  - (ii) by the DE&T under the *Public Sector Management and Employment Act 1998*; or
  - (iii) by a school council of a State school; or
  - (iv) under section 5 or 5A of the *Education Act 1958*; or
  - (v) under more than one of the paragraphs (i) to (iv) above, and
- (b) does not mean a person employed, under a contract for service or the employees or the contracted personnel of such a person.

5. Votes may be posted to the Principal or placed in the ballot box at the school on any day up to the closure of the ballot. Further details on how votes may be lodged will be provided when ballot papers are sent to the electorate of the school.

Once the nomination form is completed, return it to the Principal, Mr David Tyson, by 15 February, 2007. This can be done via the post or dropping the nomination form in at the General Office.

If there are more nominations received than there are vacancies on council, a ballot will be conducted in the two weeks after the call for nominations has closed.

## TIMELINE FOR THE TEMPLESTOWE COLLEGE COUNCIL ELECTIONS:

Notice of election and call for nominations (Via the College Newsletter).....	8 February 2008
Close of nominations.....	15 February 2008
A list of candidates, nominator & seconder will be on display at the Templestowe College General Office .....	15 February 2008
Ballot papers will be distributed (Via the College Newsletter) .....	22 February 2008
Close of ballot – All ballots to be posted to Templestowe College (Marked – Attention: Mr D Tyson, Principal) <u>or</u> hand delivered to the General Office .....	29 February 2008
Count votes & declare ballot .....	5 March 2008

New council becomes operational from the day following the declaration of the poll.

Council meeting to appoint community members on 11 March 2008 and then elect office bearers at meeting chaired by Principal, Mr David Tyson (after the Annual General Meeting of College Council).

First normal meeting chaired by President on 17 March 2008.

Remember:

- ◆ Ask at the College for help if you would like to stand for election and are not sure what to do.
- ◆ Consider standing for election to Council this year.
- ◆ Be sure to vote in the elections (material will be available via the Newsletter)
- ◆ If nominating you need to email a 150-word statement and a photograph to:

[tyson.david.d@edumail.vic.gov.au](mailto:tyson.david.d@edumail.vic.gov.au).

This will be published in the College Newsletter so parents/guardians will have some background information when voting for candidates. NB: the limit of words is 150 and will be strictly adhered to.

Contact the Principal, Mr David Tyson for further information at the email address above.

See you at the College in the near future.



**Tracey Vine**  
Council President  
email: [tavine@ozemail.com.au](mailto:tavine@ozemail.com.au)

## College Council Reporting Meeting

Parents/Guardians are invited to the College Council Reporting Meeting (*Formerly known as the Annual General Meeting*) to be held on **Tuesday, 11 March 2008 at 7.00 pm in the College Library.**

This meeting is an opportunity for Parents/Guardians to hear back from College Council of their work and to ask questions and to clarify issues.

**ALL** members of the College Community are most welcome! The meeting will go for 45 minutes and at 7.45 pm the 2007 College Council will meet for the first time in the College's Conference Room.

**David Tyson**

## College Values

### Our Purpose:

Templestowe College strives to provide programs and initiatives that enable students to achieve their personal best.

### Our Values are:

1. **Personal Best**—Seek to accomplish something worthy and admirable, try hard, pursue excellence.
2. **Responsibility**—Be accountable for one's own actions, resolve differences in constructive, non-violent and peaceful ways, contribute to society and to civic life, take care of the environment.
3. **Respect**—Treat others with consideration and regard, respect another person's point of view.
4. **Understanding, Tolerance and Inclusion**—Be aware of others and their cultures, accept diversity within a democratic society, being included and including others.

## CANTEEN NEWS



We are all looking forward to the Canteen Refurbishment, which starts in two weeks time, but until that time the Canteen will operate normally. We will keep you posted on developments as they arise.

The Canteen urgently needs volunteers to assist in the Canteen—if you are interested in assisting the school, please contact me on 9850 6333 .



**Joy Annells**  
Canteen Manager

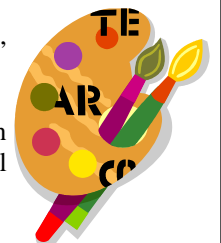
## College Council Reporting Meeting

Congratulations to the Class of 2007. Our students have been offered courses across all the universities, several TAFEs as well as a specialist private provider (JMC Academy).

The great variety of courses of interest to our student body is both a reflection of their diversity and the huge range of choices available to our young people.

The list of courses offered to our students reads like a VTAC Guide as it covers all the major areas:

- Animal Care and Management
- Business-related courses including Accounting, Banking and Finance, Commerce, International Trade and Marketing
- Education
- Engineering including Civil, electrical, Mechanical and Manufacturing
- Event Management
- Health-related courses including Human Nutrition, Massage, Nursing, Oral Health
- Hospitality/Patisserie
- Humanities-related courses including Arts, Asian Studies and Liberal Arts
- Information Technology including Computer Systems and Software Development
- Law-related courses including Legal studies and Justice
- Science-related courses including Biological Sciences, Biomedical Science, Forensic Science, Orthoptic and Ophthalmic Sciences, Psychology and General Science
- Sports-related courses including Fitness, Human Movement and Sport Development,
- Visual and Performing Arts courses including Digital Television Production Management, Music, Screen, Theatre Arts and Visual Arts.



There were also a number of students who chose to commence the following apprenticeships:

- Building
- Dental Technician
- Electrical and
- Hairdressing.

Another group has taken a 'Gap' Year in which they plan to work, save for further study and travel.

We send all our Class of 2007 our best wishes for the year ahead as they make the transition from secondary school to work or further study.

**Helen Ogg**  
Careers Coordinator

# Chaplaincy Report

## EXPRESSIONS OF INTEREST FOR THE TEMPLESTOWE COLLEGE COMMUNITY CHALLENGE IN CAMBODIA 2008

The Templestowe College Community Challenge in Cambodia 2008 is now open to 2008 Year 10 students. Currently places are available.

The intention is to continue to develop our partnership with the International School of Phnom Penh (ISPP) in the city of Phnom Penh, Cambodia and to carry on our work with the community project at the Kien Khleang Rehabilitation Centre for Landmine Survivors. In addition to spending time in the village of Choi Chomvar with the Women's Wheelchair Racing Team and the Cambodian Volleyball League for the Disabled. This will be a unique opportunity for the Templestowe College students to build relationships with other young people who live in a totally different environment.

The aim of the TCCCC08 is to offer the Templestowe students a first hand experience to live, to learn, and to work in a community very different from their own. This experience will develop a unique link with a community and school from a significantly different environment and showcase this relationship so other students may become motivated to continue the challenge and aspire to be actively involved with the

project in future years.

This will be a unique opportunity to spend 11 days in a totally different country and visit some of the most amazing places, including travelling to Siem Reap, and Phnom Penh, Cambodia, expecting to depart Melbourne about 11<sup>th</sup> September 2008, and return 23<sup>rd</sup> September 2008 with the estimated cost at about \$3,000 for airfare, and all local transfers, as well as all accommodation, insurance, taxes, local transport and guides, all entry fees, daily fresh water, breakfast and a few dinners included.



**If parents would like to make an appointment to speak with Julie Ramsay please telephone the College on 9850 6333 to make a time.**

## House Swimming Carnival 2008

The 2008 Carnival will be held on Thursday, 21 February 2008. Students from Aquila, Centaur, Dorado and Phoenix Houses will again compete with fierce House pride in traditional swimming races and novelty events. Parents are most welcome to attend as spectators on this day to support their children.

The House Swimming Carnival is an integral part of the Templestowe College year, offering activity, healthy competition, team spirit and presenting an occasion that builds a sense of community for all students and staff. The day will therefore be a compulsory event for all students at the College, with families welcome as spectators.

**DATE:** Thursday, 21 February 2008

**TIME:** 9.15 am to 2.30 pm.

**TRANSPORT:** All students will meet at the Pool. **Panorama bus travelers will be dropped off at 9.00 am and picked up from Aquarena Aquatic and Leisure Centre at 2.30 pm.** Students will be dismissed from the pool at the end of the day.

**PLACE:** Aquarena Aquatic and Leisure Centre, Williamsons Road, Doncaster (Melways ref. 33 D9)

**LUNCH:** Students are advised to bring their own lunch, as kiosk facilities are limited.

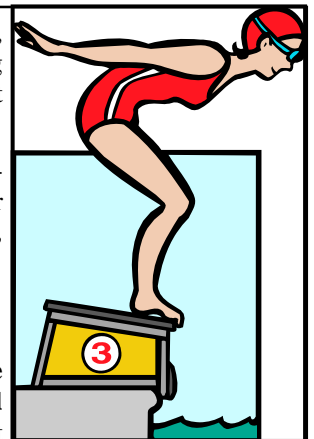
**PERMISSION FORM:** Permission forms are to be returned to school by **Friday, 15 February 2008.** Forms must be handed in to the General Office.

**COST:** There will be a **\$2.00 entry fee** that will be collected on the day at the pool.

**UNIFORM:** Students are not required to wear uniform to the Carnival however, sensible clothing, appropriate for the weather, is a must. Wearing House colours is strongly encouraged.

**SUN SMART:** As we are using the outdoor pool and surrounds, students will need to be appropriately protected from UV rays and have sufficient fluid to drink. Remember: Slip, Slop, Slap!

**DISMISSAL:** All students will be expected to stay at Aquarena for the duration of the Carnival. At the end of the Carnival, students can be dismissed from outside Aquarena after a form assembly at the end of the events. Panorama buses will pick up students from Aquarena at approximately 2.30 pm.



We look forward to your support of this annual event. Feel free to contact us if you have any questions on 9850 6333

## Year 9 & 10 Football Team



Happy New Year Guys!

I am very pleased I am your Senior Coach for 2008.

I thought our preparation for last year's season was absolutely fantastic and I am looking forward to a similar preparation this year.

There are a number of events and guest speakers I have planned for you guys before our matches commence. I will go through the whole program with you on Friday 15<sup>th</sup> February at lunchtime in the library.

I am looking forward to a really good turn out on that day to kick off another season!

Jim Asimakopoulos OAM  
Senior Coach  
[www.jimoam.com.au](http://www.jimoam.com.au)

## Health Centre Information – SunSmart UV Alert

### UV radiation—the invisible killer

Australia has the highest incidence of skin cancer in the world. One in 2 Australians will get skin cancer in their lifetime, and over 1500 Australians die from skin cancer each year.

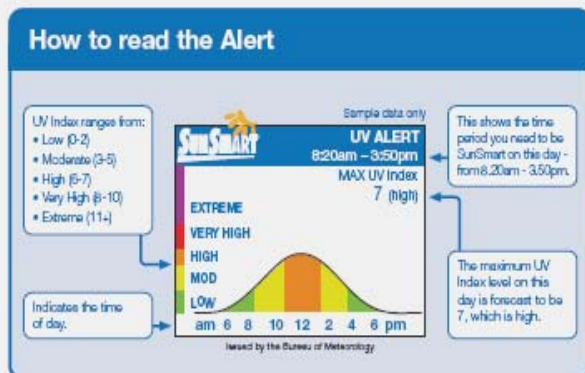
Ultraviolet (UV) radiation is the invisible killer that you can't see or feel. UV radiation can be high even on cool and overcast days, so don't rely on clear skies or high temperatures to determine when you need to protect yourself from the sun.

### What is the SunSmart UV Alert?

The SunSmart UV Alert is a tool you can use to protect yourself from UV radiation. It tells you the time during that day that you need to be SunSmart.

The Alert is issued by the Bureau of Meteorology when the UV Index is forecast to reach 3 or above. At that level, it can damage your skin and lead to skin cancer. So whenever the Alert is issued, you need to use sun protection.

The Alert is reported in the weather page of all Australian daily newspapers, on the Bureau of Meteorology website for over 200 locations across Australia, and on some radio and mobile phone weather forecasts.



### When should I use the SunSmart UV Alert?

Look or listen for the Alert when you are:

- > Planning or participating in an outdoor activity or event
- > Undertaking recreational activities such as running, swimming, cycling or team sports
- > Watching a spectator sport, such as tennis or cricket
- > An outdoor worker, or have responsibility for outdoor workers, or
- > Responsible for young children and their outdoor activities.

If an Alert has been issued, you need to be SunSmart during the times indicated.

### How to be SunSmart

The Cancer Council Australia recommends you take five steps to protect against sun damage when the SunSmart UV Alert indicates the UV Index is at 3 or above:



1. **Slip on some sun-protective clothing** – that covers as much skin as possible
2. **Stop on SPF30+ sunscreen** – make sure it is broad spectrum and water resistant. Put it on 20 minutes before you go outdoors and every two hours afterwards. Sunscreen should never be used to extend the time you spend in the sun.
3. **Slap on a hat** – that protects your face, head, neck and ears
4. **Seek shade**
5. **Slide on some sunglasses** – make sure they meet Australian Standards.

#### Check and protect

It's important for all Australians, or visitors to Australia, to look and listen for UV Index levels in local weather forecasts.

And remember, extra care should be taken between 10am and 3pm when UV Index levels reach their peak.

Templestowe College will advise students and staff daily, via the Student Bulletin and Staff Crier of the SunSmart UV Alert and advise the time during the day that you need to be SunSmart.

Di Marsh & Liz Marsh  
Health Centre Attendant

# Community Announcements



## PLAYERS WANTED

**Juniors** under 9 to 17  
**Auskick** Prep to Grade 6  
 Registration day Sunday, 10 February 2008  
 1100 am to 3.00 pm  
**Doncaster Heights Junior Football Club**  
 Focussing on youth development through sport  
 Rieschiecks Reserve  
 Cnr George & Victoria Streets  
 Doncaster East  
 Melway Map Ref: 33 J11  
**For further information contact**  
**Peter 0408 881 011 or David 0419 882 433**

## GUIDE DOGS VICTORIA OPEN DAY SUNDAY 2 MARCH, 2008 10.00 AM – 4.00 PM



Located on Chandler Hwy, Kew (Melway 45B1)  
 Free parking off-site with shuttle bus service  
 Join Dr Harry Cooper, Wags the Dog and loads of our adorable puppies for  
 Guide Dogs Victoria's annual Open

Day  
 With Guide Dog demonstrations, live entertainment, giveaways, show bags, competitions and loads of fun activities for the kids.

Open Day is a fantastic family day out  
 Entry via gold coin donation

Visit [www.guidedogsvictoria.com.au](http://www.guidedogsvictoria.com.au)  
 for full details and parking information  
 or phone: 9854 4444

Come & join FREE ENGLISH CONVERSATION CLASSES  
 at the Doncaster Church of Christ,  
 680 Doncaster Road, Doncaster  
 at 1pm on Wednesdays or 7.30pm on Thursdays  
**To register, call the church office on 9848 1546**  
**between 9.00 am & 3.00 pm, Monday—Friday**



## Box Hill Junior Rugby Union Football Club

Sparkes Reserve. Corner Canterbury & Middleborough Roads, Box Hill 3128. Melways Ref Map 47 12G

[www.boxhillrugby.rugby.net.com.au](http://www.boxhillrugby.rugby.net.com.au)

[juniors@boxhillrugby.com.au](mailto:juniors@boxhillrugby.com.au)

Rugby is a fun, safe and social game for boys and girls of all ages. No matter what shape, size or age, we'll find a level of Rugby that's right for players.

Age dispensations may be available to players that have very limited experience, are small or have disabilities.

**Registration Day 10 February 2008**  
**between 12.30 & 3pm see website for details**

## BULLEEN & TEMPLESTOWE COMMUNITY HOUSE



Term 1 2008 brochure is available now. New courses include:

- CAE Book Group (Wed evening),
- Indian Cooking class (Mon evening 25/2),
- Self Defence for Women (Wed evening),
- Intro to Word-The Next Step,
- Latin Mix Aerobics and Bollywood Dancing (Wed evening).

Visit our website at: [www.batch.org.au](http://www.batch.org.au) for full details  
 or ring BATCH on 9850-3687



**MONTMORENCY JUNIOR FOOTBALL CLUB INC.**  
 PO Box 75, Lower Plenty 3083  
 Phone/Fax : 9444 8129  
[www.montyjfc.com](http://www.montyjfc.com)  
 Email: [hallepjj@bigpond.net.au](mailto:hallepjj@bigpond.net.au)  
 President: Paula Hall

## REGISTRATION DAY-Season 2008

SUNDAY 10<sup>TH</sup> FEBRUARY, 2008  
 LOWER PLENTY FOOTBALL OVAL  
 PARA ROAD, MONTMORENCY

TIME: 9.00AM – 12.00PM

**UNDER 9, 10, 11, 12, 13, 14, 15, 16 & 17'S.\***

*\*At this stage we hope to field both bottom age and top age U17's; however the NFL is also considering an U16 competition.*

EXISTING MEMBERS AND NEW MEMBERS WELCOME

***\*\*\*Each registered member will receive a pair of each of our newly designed home and away shorts and new lycra socks as required for season 2008 by the Northern Football League\*\*\****

***\*\*\*NEW MEMBERS MUST BRING PROOF OF AGE (EG COPY OF BIRTH CERTIFICATE, HEALTH CARE BOOK OR PASSPORT\*\*\****

**MOUTHGUARDS ALSO FITTED ON THE DAY (Optional)**


**FEES: \$65 SINGLE CHILD  
 \$100 FAMILY  
 MOUTHGUARDS \$60.00**

**\*\*\*\*\*FREE SAUSAGE SIZZLE\*\*\*\*\***

Please call Paula Hall for more information if you can't make it one the day on 0418 355 392.

## Calendar of Events for your Diary

# February 2008

MON	TUE	WED	THU	FRI
				1
4	5	6 TCCCC08 Info Night—7.00 pm Year 11 Camp Info Night—7.00 pm 7.00 pm	7 Community Relations —6.30 pm	8 Newsletter No. 1 Year 7, 9, 10 Vaccinations
11 Deposit for Year 11 Central Australian Safari due	12	13	14 Finance Committee—6.30 pm	15 Cool It—Yr 7 Program
18 Deposit for Year 10 Cambodian Challenge due	19 Chaplain's Breakfast—7.30 am	20 Physical Resources Committee—7.30 am Year 7 Picnic—6.00 pm	21 House Swimming Carnival 	22 Newsletter No. 2
25 Chaplaincy Committee—7.00 pm	26 Year 7 Camp	27 Year 7 Camp	28 Year 7 Camp College Council—6.00 pm	29 Year 7 Camp

### Public Holidays — 2008

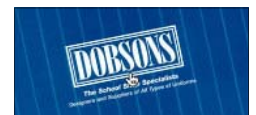
New Year's Day	01 January 2008
Australia Day	28 January 2008
Labour Day	10 March 2008
Good Friday, Easter Saturday, Easter Monday	21, 22 & 24 March 2008
Anzac Day	25 April 2008
Queen's Birthday	09 June 2008
Melbourne Cup Day	04 November 2008
Christmas Day	25 December 2008
Box Day	26 December 2008

### School Terms 2008

Term 1	Wednesday, 30 January — Thursday, 20 March
Term 2	Monday, 7 April — Friday, 27 June
Term 3	Monday, 14 July — Friday, 19 September
Term 4	Monday, 6 October — Friday, 19 December

### College Uniform Shop

**DURING TERM 1 THE COLLEGE UNIFORM SHOP WILL BE OPEN:**



**TUESDAYS 8.30 AM - 11.00 AM**

**THURSDAYS 12.30 PM - 2.00 PM**

Purchases can be made using Cash, Dobson's Account or EFTPOS (to assist parents, card details can be taken over the phone) **PLEASE NOTE THAT CHEQUES ARE NOT ACCEPTED** - For enquiries please call **9852 1855** during trading hours.

**Debbie Hannan—Uniform Shop Manager**